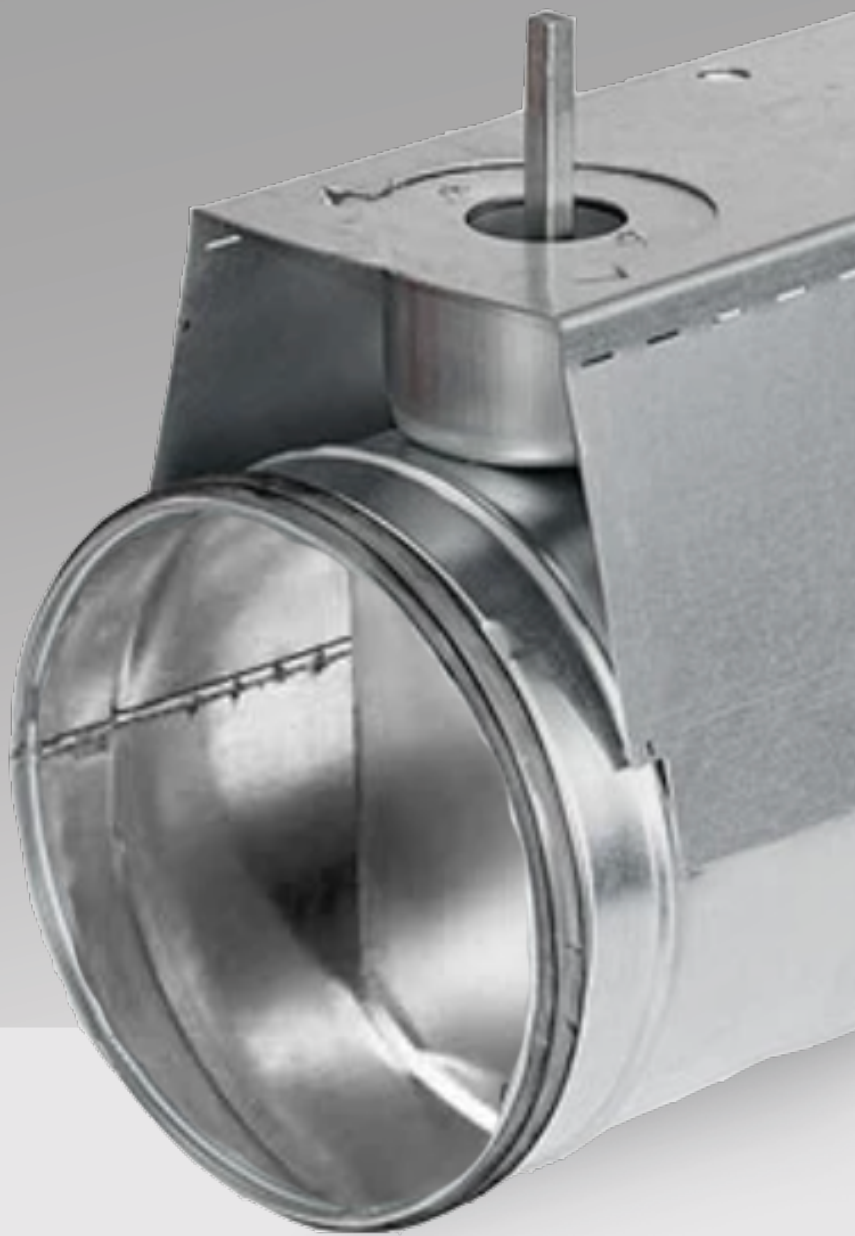


EKOVENT®

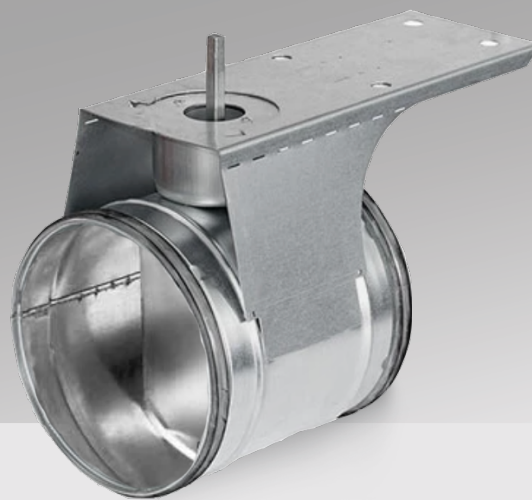


EKO-DRHU

Regulating Damper with Motor Shelf

REGULATING DAMPER WITH MOTOR SHELF

EKO-DRHU



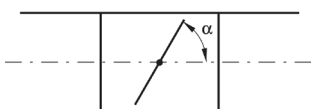
Description

Sizes Ø 80–630 are constructed with a DRU damper with an attached combination motor shelf (KOMHY). The damper lacks a handle and has an extended shaft to eliminate the need for the handle extender (VREDF).

It features a turning, cut-off blade. The blade is continuously adjustable from 0 to 90°. The damper allows for insulation thickness of approximately 50 mm. The blade is designed to minimize generated noise, which is roughly equivalent to that of a perforated blade. However, the blade is less susceptible to blockage since it does not have any perforations.

Setting angle α

$\alpha = 0^\circ$ = open blade, $\alpha = 90^\circ$ = closed blade



Sizes Ø 80–1000 meet pressure class A when closed. The cup at Ø 80–630 can be complemented with the special insulation cup IK for insulation thicker than 50 mm.

Motorizing

The motor shelf KOMHY is equipped with suitable mounting holes for Belimo's LM, NM, SM, and GM motors

Ø 1000 has two motor shelves.

For motorization, the required torque is listed in the table. The specified torque refers to the maximum value for non-pressurized dampers.

Special assembly, measurement, adjustment, and maintenance instructions are available for this product.

How to order EKO-DRHU

Regulating Damper with Motor Shelf EKO-DRHU-A-B-C

A – Size

Size according to measurement table. (Ød)

B – Material

4 = Stainless EN 1.4404

6 = Galvanized Fz (C3) - Standard

C – Actuator

1 = Without mounted electric actuator

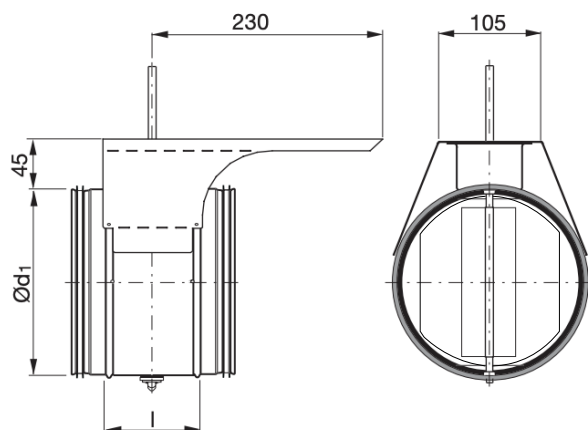
2 = With mounted electric actuator

Example: Regulating Damper with Motor Shelf
EKO-DRHU-200-6-2

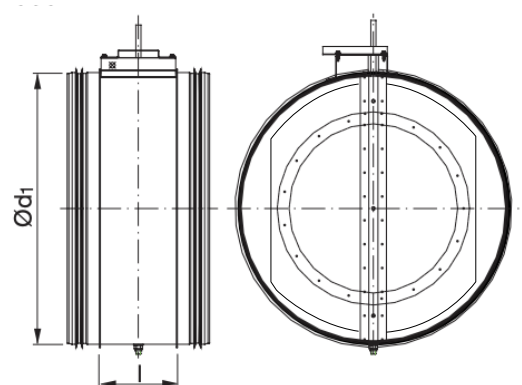
Technical Data

Dimensions

Ø 80-630



Ø 800-1000



Ød ₁ nom	l [mm]	M Nm	m kg*)	Sealing class passed closed blade	Axle dimension mm
80	100	LM-SR	0,34	0	8
100	100	LM-SR	0,40	0	8
125	100	LM-SR	0,46	0	8
160	100	LM-SR	0,65	0	8
200	100	LM-SR	0,80	0	8
250	100	LM-SR	1,28	0	8
315	100	LM-SR	1,70	0	8
400	100	NM-SR	2,82	0	8
500	115	NM-SR	4,70	0	8
630	115	SM-SR	6,21	0	8
800	230	GM-SR	18,2	0	21
1000	230	M-SR	24,4	0	21

*) Weights without actuators